

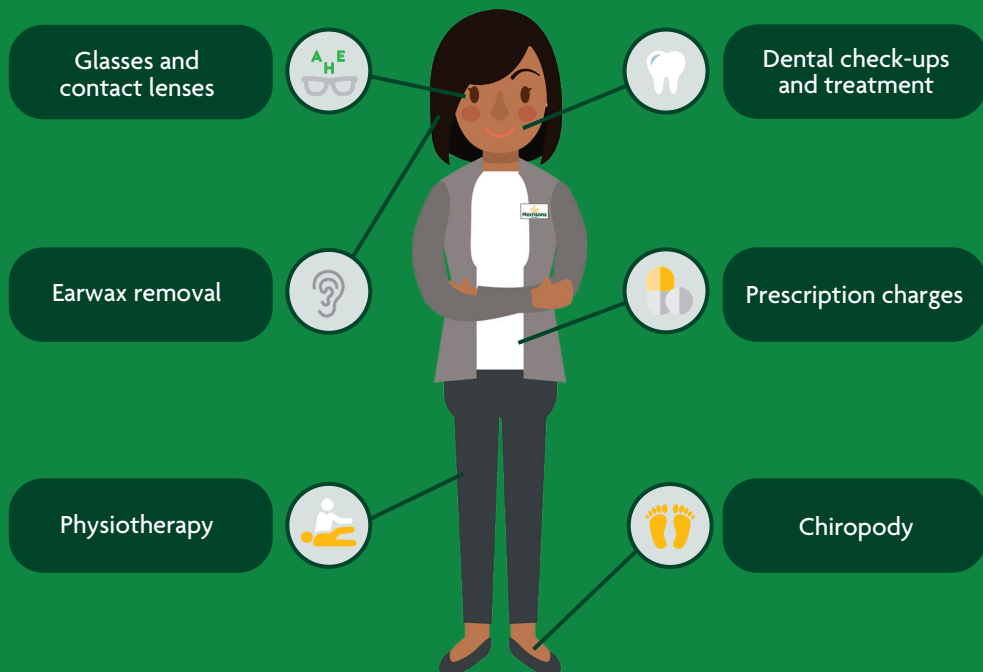


**LIMITED OFFER!**  
Get a **£30 Morrisons**  
e-voucher if you join before  
**30 November 2025†**

# Get money back on your dental and optical costs

From **£1.95 a week**, the **Morrisons health care cash plan** helps cover **dental, optical and other everyday health costs**, so paying for check-ups and treatment isn't as much of a worry.

From top to toe, here are some of the health costs it covers:



Provided by  
**Sovereign**  
Health  
Care

Turnover to find out more...

# Health insurance that's designed to be used

The **Morrisons health care cash plan** gives you money back on a wide range of everyday health costs. It covers **NHS and private treatment**, there's no medical to join and no annual contract.

When you make a claim, you'll get **100% of your dental and optical** costs back, up to your cover level limit, and up to **50% of other health costs**.\*

Claiming is easy - just pay your bill as normal and ask for a receipt with your name on it. You can claim online or by post and the money can be paid into your bank account.

## Up to four dependent children covered for free!

For no extra cost, an adult's plan covers up to four dependent children, aged under 18, for many of the benefits.

## Cover other family members

You can pay to cover your partner or a family member, so they too can enjoy the exclusive benefits of the Morrisons health care cash plan.

## To find out more and join online, visit:



[sovereignhealthcare.co.uk/colleaguecashplan](https://sovereignhealthcare.co.uk/colleaguecashplan)



If you have any questions, please call **01274 841130**

Lines are open Monday to Thursday from 9am to 5pm, and Fridays from 9am to 4pm.



Or scan the QR code to apply

## LIMITED OFFER!

Get a **£30 Morrisons** e-voucher if you join before **30 November 2025<sup>†</sup>**

<sup>†</sup>Terms and conditions apply. Limited Morrisons e-voucher offer runs from 1 August 2025 to 30 November 2025.

\*Certain benefits have a qualifying period or a 6 month qualifying period for pre-existing conditions. See [sovereignhealthcare.co.uk/colleaguecashplan](https://sovereignhealthcare.co.uk/colleaguecashplan) for details.

Sovereign Health Care is a company limited by guarantee. Registered in England no 85588. Authorised by the Prudential Regulation Authority and regulated by the Financial Conduct Authority and the Prudential Regulation Authority. Registered office: 2nd Floor, West Wing, The Waterfront, Salts Mill Road, Shipley, Bradford BD17 7EZ.